

KONTAKT 500

MBBR/IFAS Media

Jaeger Environmental

1121 Richmond St. (Physical)
P.O. Box 240 (Mailing)
Selma, VA 24474
Phone: 540-862-8426
Fax: 540-862-8427
Email: info@jaegerenvironmental.com
www.jaegerenvironmental.com

Corporate Offices: Jaeger Products, Inc.

1611 Peachleaf St.
Houston, Texas 77039
800-678-0345
281-449-9500
Fax: 281-449-9400
E-mail: jpinfo@jaeger.com
www.jaeger.com



RASCHIG GmbH

Mundenheimer Strasse 100
67061 Ludwigshafen - Germany
Phone: +49.621.5618-602
Fax: +49.621.5618.604
E-mail: hneis@raschig.de
www.raschig.de

Locations/Production Sites:

Ludwigshafen, Germany
Espenhain, Germany
Houston, Texas
El Dorado, Kansas
Monterrey, Mexico

KONTAKT™ High Performance Carrier Elements for MBBR and IFAS Processes

A key component to the MBBR (Moving Bed Biological Reactor) and IFAS (Integrated Fixed-Film/ Activated Sludge) processes is the efficiency of the reactor media or carrier element. Jaeger Environmental has developed KONTAKT™; a lightweight, durable, rugged and highly efficient media for MBBR and IFAS applications.

The KONTAKT design allows the media to freely move throughout the bioreactor while providing a significant protected surface area for biomass to adhere.

KONTAKT is added to aeration tanks and retained by a separation device. Diffused aeration systems and/or low energy mechanical mixers usually achieve sufficient agitation of the media.

KONTAKT offers key benefits to MBBR / IFAS applications:

- Manufactured of durable high density polyethylene
- Lightweight with a variable specific gravity from 0.93 to over 1.05 for HDPE material
- Provides a large protected surface area
- Open internal design resists clogging
- Long lasting, economical, and easy to ship and install
- Easily upgrade overloaded aerated basins or A/S plants by adding KONTAKT and minor system upgrades
- Eliminate sludge recycling
- Cost effective solution for retrofitting existing treatment systems
- Inexpensive alternative media for new plants

KONTAKT has the following characteristics:

TYPE	SIZE	WEIGHT, DRY	SURFACE AREA	PROTECTED SA	VOID SPACE
KONTAKT 500	0.80" Diameter x 3/8 - 5/8" Long	9 lbs/ft ³	152 ft ² /ft ³	113 ft ² /ft ³	92%

Jaeger Environmental can help you with your municipal or industrial wastewater application. Our other products include three different types of trickling filter media including our Sessil hanging strip media, Bio-Pac SF#30 random dump media, and Dura-Pac PVC modular media. We also manufacture media for submerged fixed bed systems, wastewater screening systems and random dump tower packings for air scrubber and stripping applications.

Please contact Jaeger Environmental to discuss your application today.

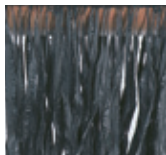


When it comes to wastewater,

We hold THE LINE.

Wastewater treatment can be both complicated and expensive, but Jaeger Environmental has all the tools you need to get it done – both efficiently and at a price you can afford.

Offering the industries' only comprehensive line of trickling filter and fixed film products, Jaeger is your single solution to any industrial and municipal wastewater treatment application.



Sessil® – Unique “strip-type” media for high-strength industrial and municipal wastewaters from production of food products, beverages, pulp and paper, chemicals, and pharmaceuticals. With no packing interfaces to accumulate solids, it can improve process control stability, decrease sludge production, and lower operating costs.



Bio-Pac SF#30 – Random plastic media for trickling filters, submerged beds, and anaerobic reactors. Excellent for shallow trickling filter applications, it's also used extensively in upflow anaerobic and aerobic submerged bed reactors.



Dura-Pac – Crossflow and vertical flow, self-supporting PVC sheet media for municipal secondary treatment, nitrification, roughing filters, and submerged fixed beds. It's also useful for other wastewater treatment applications including oil/water separators.



Kompakt – Tubular block media consisting of welded polyethylene tubes for use in submerged fixed beds. The 3-dimensional openness of Kompakt allows for complete mixing of the liquid in the reactor, improving treatment efficiency. Activated sludge aeration basins can be retrofitted with Kompakt to increase treatment capacity.

For trickling filter – and other wastewater and mass transfer applications – Jaeger Environmental has you covered, with the experience and knowledge to assist you from evaluation through construction and operation. Contact us today to see how we can work for you.

REPRESENTED BY:

